

# MONTHLY MEMBERSHIP PROGRESS REPORT

LOCATION ENGLAND

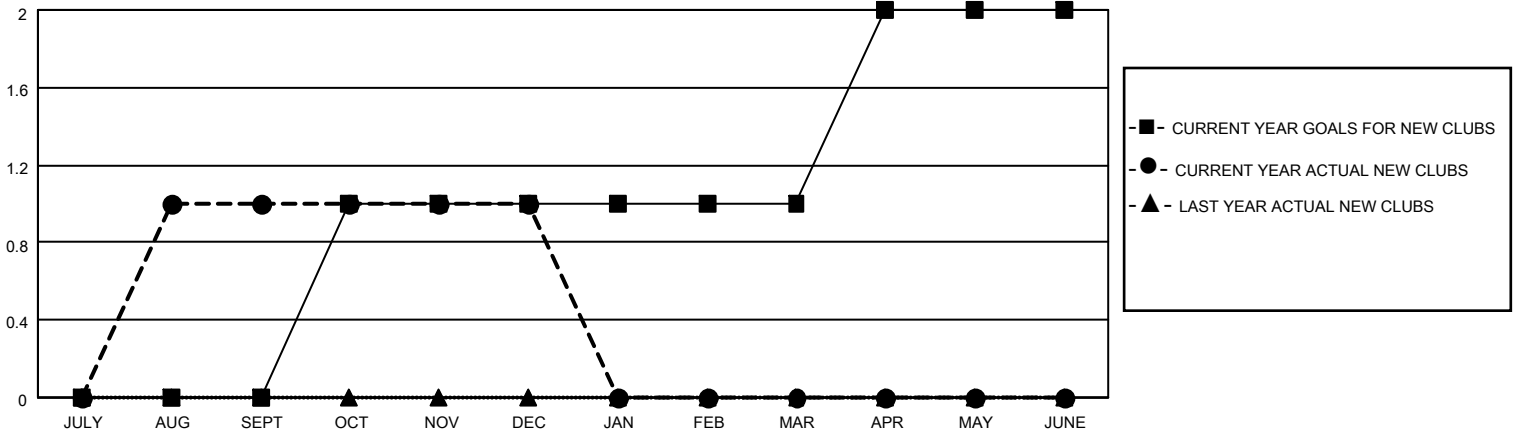
District 105CW

Results as of: 12/31/2020

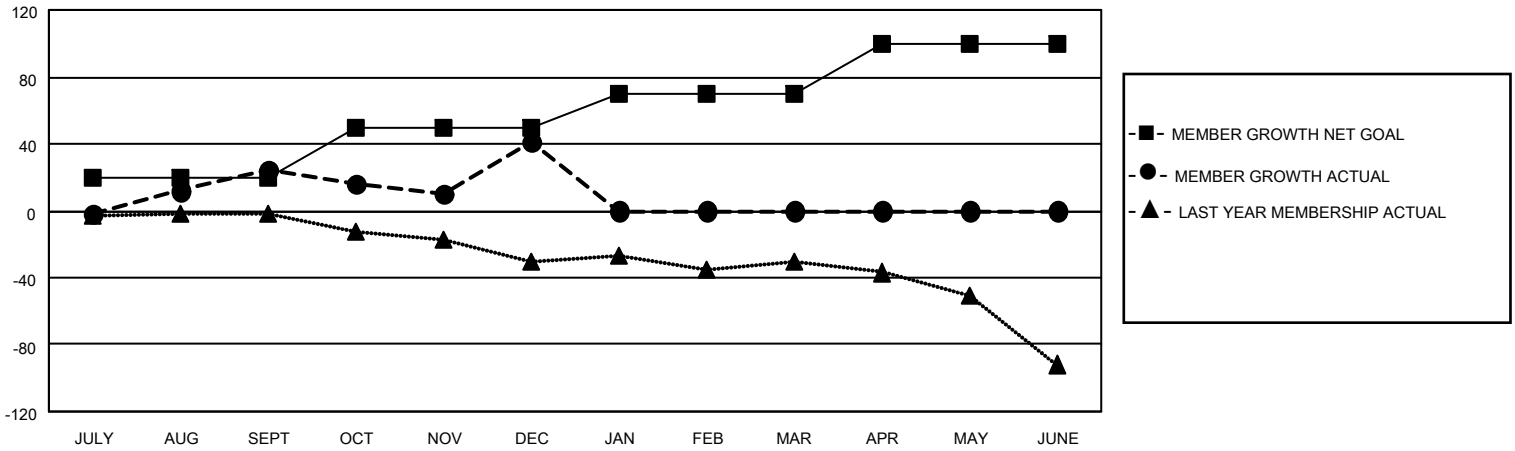
Clubs			
RESULTS FOR 2020-2021			
QUARTER	NEW CLUB GOAL	NEW CLUBS	DROPPED CLUBS
JULY/AUG/SEPT	0	1	1
OCT/NOV/DEC	1	0	0
JAN/FEB/MAR	0	0	0
APR/MAY/JUNE	1	0	0

Members			
RESULTS FOR 2020-2021			
QUARTER	MEMBER GROWTH NET GOAL	MEMBER GROWTH ACTUAL	DROPPED MEMBERS ACTUAL (including transfers)
JULY/AUG/SEPT	20	72	42
OCT/NOV/DEC	30	73	49
JAN/FEB/MAR	20	0	0
APR/MAY/JUNE	30	0	0

**GOALS AND ACTUAL NEW CLUBS CUMULATIVE**



**GOALS AND ACTUAL MEMBERS CUMULATIVE**



DROPPED CLUBS: 1	24 CLUBS OF 92 ADDED 1 OR MORE NEW MEMBERS	<u>GENDER DISTRIBUTION</u> MALE 1,222 (72.31%) FEMALE 468 (27.69%)
<u>DROPPED MEMBERS</u> DECEASED 7 CLUB CANCELLED 0 OTHER 84 <hr/> TOTAL 91	<a href="#">CLICK HERE FOR CUMULATIVE MEMBERSHIP DATA</a>	TOTAL FAMILY UNIT MEMBERS 216 FAMILY MEMBERS PAYING HALF DUES 109